

ConneXion

March 2024

01 Edition

BioHorizons Camlog

We are implantology with heart and soul, striving for excellence, accelerating prosperous evolution, together; caring for each other's well-being. For our customers, their patients, and teams.

For our business partners, our employees and the communities, we live in.



Welcome to the first issue of ConneXion 2024



As we embark on 2024, BioHorizons Camlog is poised to build on our legacy of success in implantology.

This year, we're excited to introduce a cutting-edge modulated implant program - Guided Implant Dentistry, in collaboration with Prof. Axel Spahr from Apoona Health Solution. In terms of innovation, we are proud to announce two groundbreaking products set to debut in the second half of the year.

Dive into this newsletter to explore the advancements and initiatives that will continue to position BHCL at the forefront of implantology excellence.

- Kellie Paull
Surgical Business manager ANZ



2023

A Year of Innovation and Education

2023

As we reflect on the past year, we at BioHorizons Camlog are proud to celebrate the remarkable achievements and breakthroughs we've accomplished in 2023. It was a year marked by innovation, education, and collaborative success, setting a new benchmark in our journey of implantology excellence.



Launch of CONELOG Progressive Line Implants and Striate+

We started the year strong with the launch of our CONELOG Progressive Line Implants System and Striate+, bringing advanced solutions to our customers. These innovative products have set new standards in implant technology, offering enhanced stability and precision to dental professionals worldwide.



Global Education Tour with Dr. Nick Fahey

July was a milestone month for us as we hosted our Global Education Tour led by the esteemed Dr. Nick Fahey. This event was a resounding success, drawing attendees from around the globe and showcasing our commitment to ongoing professional development in implantology.



2023

A Year of Innovation and Education

Kikada Lane Implant Course with Prof. Axel Spahr

In collaboration with Apoona Health Solution and Kikada Lane, we hosted the Kikada Lane Implant Course, led by the renowned Prof. Axel Spahr. The course was met with great acclaim, further solidifying our role as leaders in implant education and training.



Expanding Our Team

2023 was also a year of growth for our team. We welcomed a diverse group of skilled professionals, each bringing unique expertise and fresh perspectives to BHCL.

These new team members have been integral in driving our innovation, enhancing our educational programs, and improving customer service. Their passion and dedication are pivotal in our continued success.





Team's Update



National Full Arch & Digital Solution Specialist

Colin will now be traveling nationally to directly assist our teams and customers, ensuring that every full arch case receives the highest level of expertise and care. If you have a full arch case on the horizon, Colin is your go-to expert. His dedication and proficiency in providing support for Full-Arch cases make him an invaluable asset to your team.

[Reach out to Colin](#)

Sales Specialist of the Year - Au

We are beyond excited to share that our very own Surgical Specialist Kate Lee has won the Sales Specialist of the Year AU award from both BioHorizons Camlog Australia and Henry Schein Australia.

This double honor was unveiled at the recent BHCL APAC Kick-Off meeting held in Vietnam, as well as during last week's Henry Schein Australia Vision Award. It acknowledges Kate's exceptional dedication, hard work, and remarkable contribution to our sales success over the past year.

Join us in celebrating Kate's incredible achievements! Your hard work and dedication inspire us all, and we eagerly anticipate your continued growth and success.



NEW TO IMPLANTOLOGY
OR LOOKING TO EXPAND
YOUR SKILLS?

REGISTER NOW

MODULATED PROGRAM | STARTING JUNE 2024
HANDS-ON COURSE | MENTORING | LIMITED SPOTS



Education

Guided Implant Dentistry 2024

New to implantology or looking to expand your skills? We got you covered

Brought to you by BioHorizons Camlog Australia and Apoona Health Solutions, Guided Implant Dentistry 2024 is an expertly curated modulated Program. It is specifically designed to empower dental professionals who are keen to introduce implantology into their practices or enhance their current skills in this advanced field.

Under the esteemed leadership of Prof. Axel Spahr, an acclaimed figure in implantology, each module is structured to offer a comprehensive and in-depth understanding of contemporary implantology techniques. Spanning from June to December, this course provides a unique opportunity to learn from a leading expert and significantly transform your approach to dental implantology.

LEARN MORE

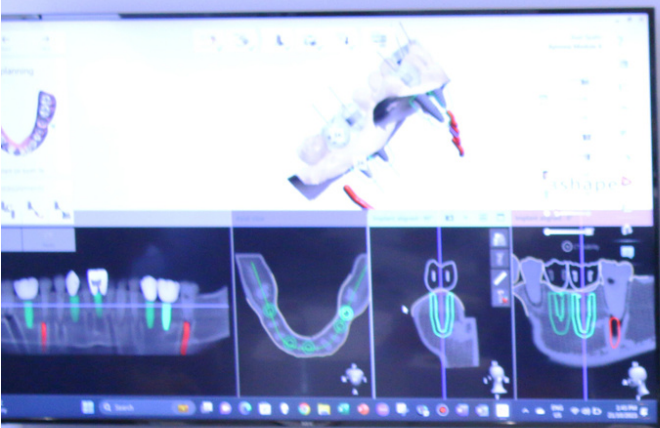
COURSE PACKAGE

Course Fee \$27,000 exc GST include:

- 7 Modules implant course + complimentary implants and surgical kits you will need for live patient surgery (includes 5 x implants, 5 x healing abutments and a Conelog Guided Surgical Kit)
- 50% OFF first two cases post courses (inc implants, biomaterials and prosthesis components)



REGISTER NOW



Education

Learning Outcome:

- Pre-implant assessment, planning, treatment, and patient selection
- Surgical protocols and techniques
- Anesthetics and pain management
- Infection control principles
- Selection of implant types and materials
- Digital workflow including Guided and Free-Hand placement
- Restorative techniques including immediate temporisation
- Post-op assessment and implant maintenance

Key features of the course:

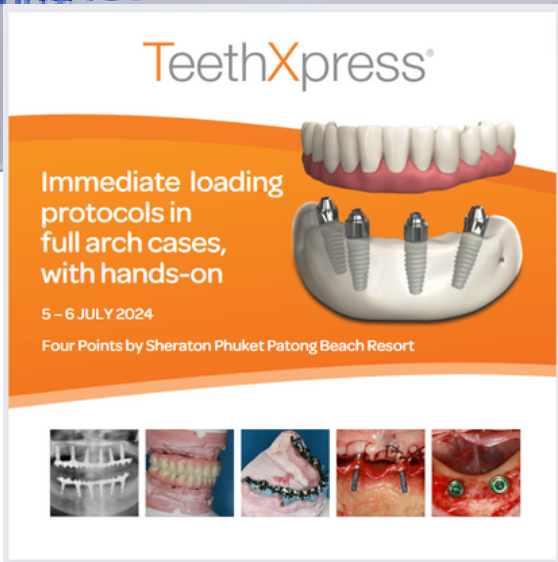
- Implant placement on models both free hand and guided
- Surgical procedures using two implant systems – BioHorizons & Camlog progressive line
- Surgical Exercises-Suturing techniques on Pig jaws & simulation models
- Case Presentation
- Supervised Live surgeries
- Post-course Mentorship



This photo was taken during Module 5 -Supervised live surgeries



REGISTER NOW



TeethXpress

We are excited to share that, in 2024, the TeethXpress course will be held on 5th and 6th July in Phuket, Thailand by Dr William Li.

The objective of this course is to introduce TeethXpress protocol from surgical to restoration. In this course, various treatment concepts for the edentulous arch, their benefits, case selection and surgical protocol for straight and tilted implants for immediate loading will be discussed. Dr. Li will illustrate the techniques for ridge manipulation and delivery of angled multi-unit abutments. He will equip participants with the knowledge of design concepts in implant prosthodontics for fabricating final restoration and material choices to minimize chair time for optimal patient care, efficiency, and profitability. Participants will gain an insight of the full digital protocol, risk assessment and prevention of complications.

COURSE HIGHLIGHTS

- TeethXpress Concepts: Surgical and Restorative Protocols
- Immediate Loading: Benefits to Patients and Clinicians
- Case Selection for Immediate Loading
- Risk Factors to Prevent Complications
- Hands-On: Immediate Provisionalization and Impression Technique

[LEARN MORE](#)

Events

ADX SYDNEY 2024

We're thrilled to extend a special invitation for you to join us at ADX Sydney 2024, the premier dental event of the year, taking place from 20th - 23rd March at the ICC Sydney.

BioHorizons Camlog will be at the heart of the action at **Booth 621**, showcasing our groundbreaking solutions in implantology, including the highly anticipated Guided Implant Dentistry program and our innovative new products set to redefine dental practices.

Our team of experts, including renowned professionals from the field, will be there to share insights, discuss challenges, and explore how our latest advancements can benefit your practice. It's not just about products; it's about fostering a community that advances together.



CONELOG PROGRESSIVE-LINE

CONICAL PERFORMANCE AT BONE LEVEL

CONELOG® PROGRESSIVE implants are based on the clinically proven, user-friendly CONELOG connection and successful BioHorizons buttress thread design. The combination of these proven design features delivers an implant system capable of treating a wide range of indications with modern concepts, including digital workflows and immediate protocols.

- long conus for reduced micromovements
- superior positional stability in comparison to other conical systems
- easy positioning with tactile feedback
- integrated platform switching
- "vertical fit feature" designed to minimize vertical discrepancy during workflow



GUIDED MADE SIMPLE

"I simply love the geometry of the BioHorizons Camlog CONELOG PROGRESSIVE-LINE implant and the great primary stability this implant achieves. I think the flutes on the side of the drill profile are fantastic. There are also keyless guides which mean you don't have to use an accessory handle like some guides, so it is user-friendly. I like the conical connection and the implant surface is very good and clean. With German precision and a self-locking connection, it enables you to have precise positioning of the abutments. Quite simply, it's got a lot going for it, especially if you only want to use one implant system!"

- Dr Nick Fahey, Specialist Prosthodontics UK



[LEARN MORE](#)





Striate+™

advancing innovation of collagen membranes



Striate+™ is produced in Western Australia by Orthocell using a proprietary SMRT™ manufacturing process free from crosslinking or chemical modification. This technique preserves the collagen structure while removing all traces of DNA and immunogenic contaminants, creating a favourable environment for optimal tissue regeneration.

Striate+ optimizes guided tissue repair including critical bone defects, enables tissue integration as well as acting as a cell occlusive barrier.

applications

- Immediate extraction sites
- Delayed extractions sites
- Graft containment of bone defects
- Guided bone regeneration
- Guided tissue regeneration
- Periodontal defects

- **Non-crosslinked, acellular Type I collagen** does not induce abnormal inflammatory response*
- **Bi-layer membrane** readily conforms to bone surfaces
- **Dense barrier layer** prevents infiltration of gingival cells while allowing passage of bioactive molecules and proteins*
- **Bioactive chamber** allows early integration of bone-forming cells and provides a favorable environment for osteogenesis*

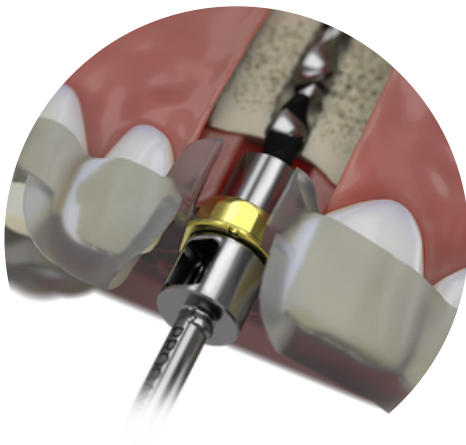
[LEARN MORE](#)

Keyless guided and freehand workflows in a single kit, for a new level of flexibility and predictability

Pro Guided Surgery



The Pro surgical kit from BioHorizons offers predictability and flexibility in a single system. Guided implant placement can be performed with control and precision following a keyless drilling protocol. The same set of length specific drills can also be used for freehand placement, offering flexibility for treatment planning and for surgery.



features

- keyless guided surgery solution
- supports guided and freehand surgical protocols
- spare slots for additional instrumentation
- color-coded instruments for easy recognition of compatibility
- fully guided implant placement maintains control throughout the full protocol

Pro Surgical System
from BioHorizons®

COMING SOON



Meet the Team

Collaborating with a leading implant provider encompasses far more than the selection of a high-quality, tested implant system. It's about engaging deeply, offering consistent support during procedures, providing steadfast customer service, and maintaining availability for every need.

Whether your interests lie in discussing implants, biologics, digital solutions, participating in a lunch and learn, attending a course or event, exploring business development opportunities, or even just grabbing a coffee for a casual conversation, we are ready to assist you.



[Get in touch!](#)